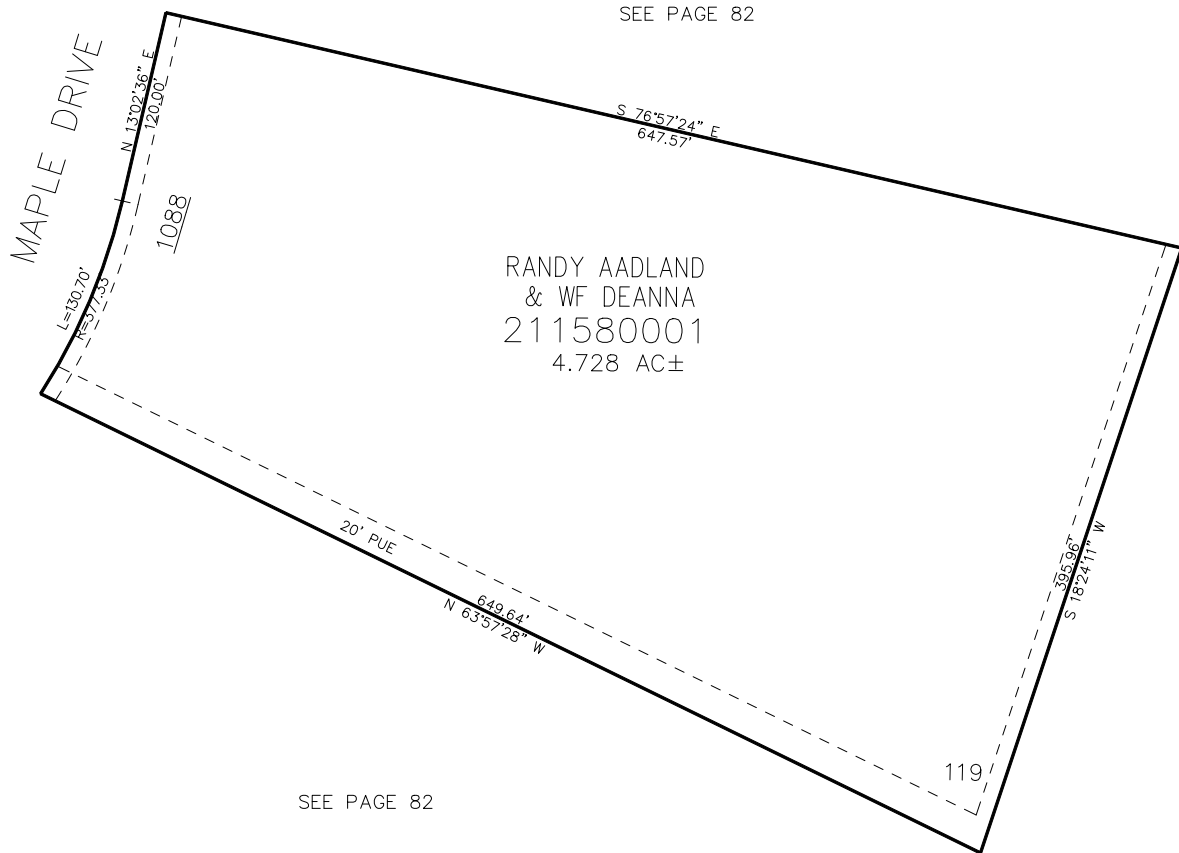


PART OF THE NE. 1/4, OF SECTION 9, T.6N., R.2E., S.L.B. & M.
GREEN HILL COUNTRY ESATES PHASE NO. 6 2ND AMENDMENT

IN WEBER COUNTY

TAXING UNIT: 231

SCALE 1" = 60'



10' UTILITY & DRAINAGE EASEMENTS EACH
SIDE OF PROPERTY LINES AS INDICATED
BY DASHED LINES EXCEPT AS OTHERWISE
SHOWN.

FOR COMPLETE ENC DATA SEE
ORIGINAL DEDICATION PLAT IN
BOOK 87, PAGE 80 OF RECORDS.